

# Hurstville Entertainment Centre

## Marana Auditorium Technical Specifications January 2023

### VENUE ACCESS

#### LOADING DOCK

The HEC Loading Dock is located off Queens Road, Hurstville, next to the Hurstville Senior Citizens Centre.

When travelling south-west on Queens Road, loading dock entry is on the left hand side, approximately 60 metres before traffic lights on the corner of Queens Road and Dora Street.

Please contact the Duty Officer with your estimated time of arrival: phone 0411 743 258. Unless otherwise arranged, vehicles must be moved to the car park next to the Hurstville Museum & Gallery (access via MacMahon Street) once load-in has been completed.

Loading access to stage can be made via goods lift located on stage right, adjacent kitchen.

#### CREW PARKING

Parking for performers or crew needs to be arranged prior to arrival. There is parking located next to the Hurstville Museum & Gallery (access via MacMahon Street).

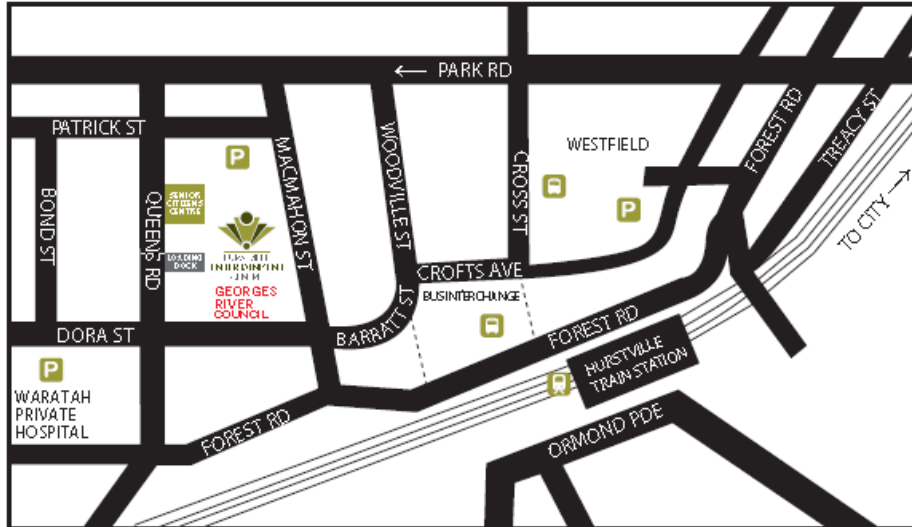
A limited number of parking permits are available at the discretion of HEC staff. Please enquire when booking.

#### LOCATION

The street address for Hurstville Entertainment Centre is 16 MacMahon St, Hurstville.

# Hurstville Entertainment Centre

## Marana Auditorium Technical Specifications January 2023



# Hurstville Entertainment Centre

## Marana Auditorium Technical Specifications January 2023

### AMENITIES AND EQUIPMENT

#### STAGE EQUIPMENT

- Stage Backdrop is either Cyclorama or Black Curtain (Smother)
- Stage House Curtain (Maroon) – operated via counterweight system (up/down, fly operator required) or open/close by pulley on the PS of stage (no operator required)
- 3 pairs of Black Wool Legs
- “Baldwin” Grand Piano available, located at Prompt side of stage
- Assortment of ladders located side stage

#### BACK OF HOUSE

- Entry to stage from backstage/dressing rooms – stage left or right
- Entry to stage from audience area – stairs stage left or right
- Wheelchair access to stage via goods lift
- Dressing rooms – 2 at back of stage + 3 located on level above
- Bathrooms – 2 at the dressing rooms back of stage + 2 in dressing rooms on level above.
- Showers – 2 at the dressing rooms back of stage + 2 in dressing rooms on level above.
- Green room located on stage right (OP) back corner
- Crossover at rear of Cyclorama and via dressing rooms corridor

# Hurstville Entertainment Centre

## Marana Auditorium Technical Specifications January 2023

### STAGE SPECS

Proscenium Height	6.10m
Proscenium Width	10.35m
Rake – Cyc to Proscenium Arch	0.13m (130 mm)
Depth – Cyc to Proscenium Arch	6.70m
Depth – Cyc to rear of Orchestra Pit	8.84m
Depth of Orchestra Pit	1.82m
Width of Orchestra Pit	8.90m
Orchestra Pit Capacity	25 people maximum
Performance Space	10.35m (W) x 8.84m (D) x 6.10m (H)
Wing Space Prompt Side of Stage (proscenium edge to fly lines)	7.10m
Wing Space OP Side of Stage (proscenium edge to wall)	4.90m
Counter-weighted Fly Lines (excluding house curtain)	13 lines
Data Projector to Mid Screen	12.15m
Data Projector to Cyclorama	16.55m

# Hurstville Entertainment Centre

## Marana Auditorium Technical Specifications January 2023

### PRODUCTION EQUIPMENT

#### FRONT OF HOUSE SPEAKER SYSTEM

The sound system is Mono Electro Voice EVA vertical array centre cluster with 5 fixed elements each 350w @ 16ohms.

Other specs on FOH system include:

- Electro Voice QRX218S 2 x 18" flown subwoofer 1200w @ 4ohms
- Electro Voice CPS 4.10 amp 4x1000w @ 4ohms
- Electro Voice CPS 2.12 amp 2x1200w @ 4ohms
- Electro Voice DC One speaker processor

Front fills and fold backs:

- 2 x 15" Electro Voice EV-ZLX15P active front fills
- 4 x 12" Electro Voice EV-ZLX12P active fold back monitors
- 2 x 12" JBL EON612 powered speakers, 430w stage fills

6 x Shure SLX Wireless Systems permanently patched into channels 1 through 6.  
1 x Shure SLX Wireless System rowing.

#### SIGNAL / MULTICORE

All patch points connect back to Stage Box located in the Audio Rack at stage left. Channels 7–24 only. Microphone XLR patch points are located across front of stage and in 3 of the trap doors on stage, located in the following positions:

- Downstage Left
- Downstage Right
- Upstage Centre

The Marana Auditorium is equipped with Allen and Heath AR2412 Digital Stage box, Multicore is not used. Additional Digital Floor Box can be connected to the main sound rack via a Cat 6 outlet, located on stage right.

Multicore for connecting additional equipment is available and is located on stage right. Please note if you wish to use additional floor box or the Multicore, an additional hire fee will be charged for this equipment (price on application).

# Hurstville Entertainment Centre

## Marana Auditorium Technical Specifications January 2023

### CONTROL ROOM (BIO BOX) SPECS

- 1 x Allen and Heath SQ5 Digital Sound Mixer configured to 24 channel operation with Allen and Heath AR2412 digital stage box 24 XLR in 12 XLR out, expandable to 40 channels with the addition of Allen and Heath AB1608 Digital Stage Box.

Please note if you wish to use the additional AB168 Stage Box an additional hire fee will be charged for this equipment.

- 1 x LSC Clarity Computer Based Lighting Control Desk and LSC VX20 Programmable Control Wing
- 1 x HDMI connection to projector

### SIMPLE STAGE RACK MIX

Located at Prompt Side

- 1 x Australian Monitor MX81 8ch mono mixer
- 1 x Redback single CD player
- 1 x Aux- iPod/PC 3.5mm mini jack connection
- 1 x Jands Ezicom master station

### POWER SUPPLY

- 1 x 32amp 3 phase outlet located under stage (stage right)
- 1 x 15amp outlet located at Prompt side of stage
- 1 x 15amp outlet located at Off Prompt side of stage
- 1 x 15 amp outlet located at the Cloak Room in the foyer of Marana Auditorium
- 3 x 32amp 3 phase outlets located at the Fly Level platform Prompt side of stage. These 3 outlets available only if light dimmers are not required i.e. only LED lights are being used.

# Hurstville Entertainment Centre

## Marana Auditorium Technical Specifications January 2023

### MICROPHONES, CABLING & STANDS

- 7 x Shure SLX wireless system (7 x SM58 wireless, 4 x WL185 lapel, 4 x head set)
- 8 x Shure SM58
- 2 x Shure SM57
- 5 x Assorted DI Boxes
- 2 x Behringer C2 Condenser Mics
- 3 x Choir Condenser Mics
- Assortment of XLR Cabling to suit
- 5 x Tall Boom Mic Stands
- 3 x Short Boom Mic Stands

### COMMS

- 1 x Jands Ezicom master station in Stage Rack
- 4 x Jands E101 belt packs
- 5 x headsets

Comms outlets located at:

- 1 x Bio Box
- 1 x Prompt side stage
- 1 x Fly position
- 1 x Off Prompt position

# Hurstville Entertainment Centre

## Marana Auditorium Technical Specifications January 2023

### AUDIO VISUAL

- 1 x Panasonic UHD Laserlight Projector located on FOH Lighting Bar

Image size at 16:9 ratio is:

3.7 metres (H) x 7 metres (W) when projected to Cyclorama

3.4 metres (H) x 6.3 metres (W) when projected to Mid Screen

- HDMI Connection on stage left

Image can be projected onto Cinema Screen (Fly bar 9) or onto Cyclorama (Fly bar 25)

### ADDITIONAL SHOW CONTROL

Additional Show Control position is available at the Gallery, centre position or directly under the gallery at the back of house. Patch points include:

- DMX
- Audio return
- Comms
- HDMI
- 220v power outlet
- RJ45 Cat 6 connection for AH SQ5 Mixing Desk
- RJ45 Cat 6 connection for LCS Clarity VX20 wing



# Hurstville Entertainment Centre

## Marana Auditorium Technical Specifications January 2023

### LIGHTING SYSTEM

House Lighting can be controlled either side stage (stage left) or Control Room (Bio Box)

Stage light control – LSC Clarity Computer Based Lighting Control Desk and LSC VX20 Programmable Control Wing located in Control Room (Bio Box)

106 stage and room circuits feed to patch bay located on PS Fly Floor

3 x 12 channel Jands VMX dimming units – please refer to patch list and lighting plot for current default house lighting patch

2 x lighting universes – 1024 DMX Channels Universe “A” and “B”

### FOH LIGHTING UNITS:

Bridge

- 2 x Selecon Pacific Zoom Profiles 12/28 1K focused on Lectern position PS
- 6 x PS200 LEDWW Profile Spot 200W 19-degree lens

FOH Bar

- 4 x LEDWW EK Profiles HP 3 channel 200W 19-degree lens
- 4 x PAR64 1K MFLs
- 2 x Event Tech MIH240W intelligent moving lights

### STAGE LIGHTING UNITS:

Stage Bar 1

- 8 x Frenzo ZE2 200W WW LED Fresnel with motorised zoom
- 4 x Selecon PCs 1000w
- 2 x Event Tech MIH200W intelligent moving lights
- 7 x Show Pro Quad 18 LED RGBAW Par

# Hurstville Entertainment Centre

## Marana Auditorium Technical Specifications January 2023

### Stage Bar 2

- 8 x Frenzo ZE2 200W WW LED Fresnel with motorised zoom
- 4 x Selecon PCs 1000w
- 2 x Event Tech MIH200W intelligent moving lights
- 7 x Show Pro Quad 18 LED RGBAW Par

### Stage Bar 3

- 5 x 3 Bank Cyc Lights 500w each
- 2 x Event Tech MIH200W intelligent moving lights
- 4 x Eventec 12x12 LED Pixel bars
- 7 x Show Pro Quad 18 LED RGBAW Par

### Booms

- 4 x Altman Shakespeare Profiles 650w (2 per side)
- 2 x PAR64 1K MFLs (1 per side)
- 2 x LEDWW EK Profiles HP 3 channel 200W 19-degree lens (1 per side)

### Over stage booms (over proscenium)

- 2 x Altman Shakespeare Profiles 650w (1 per side)

### FX:

- 1 x Hazer – Antari 500, DMX controllable\*
- 1 x Mirror ball 16” located in centre of room
- 1 x Solo 2k follow spot (with stands and “model 1” single channel dimmer) located in Bio Box

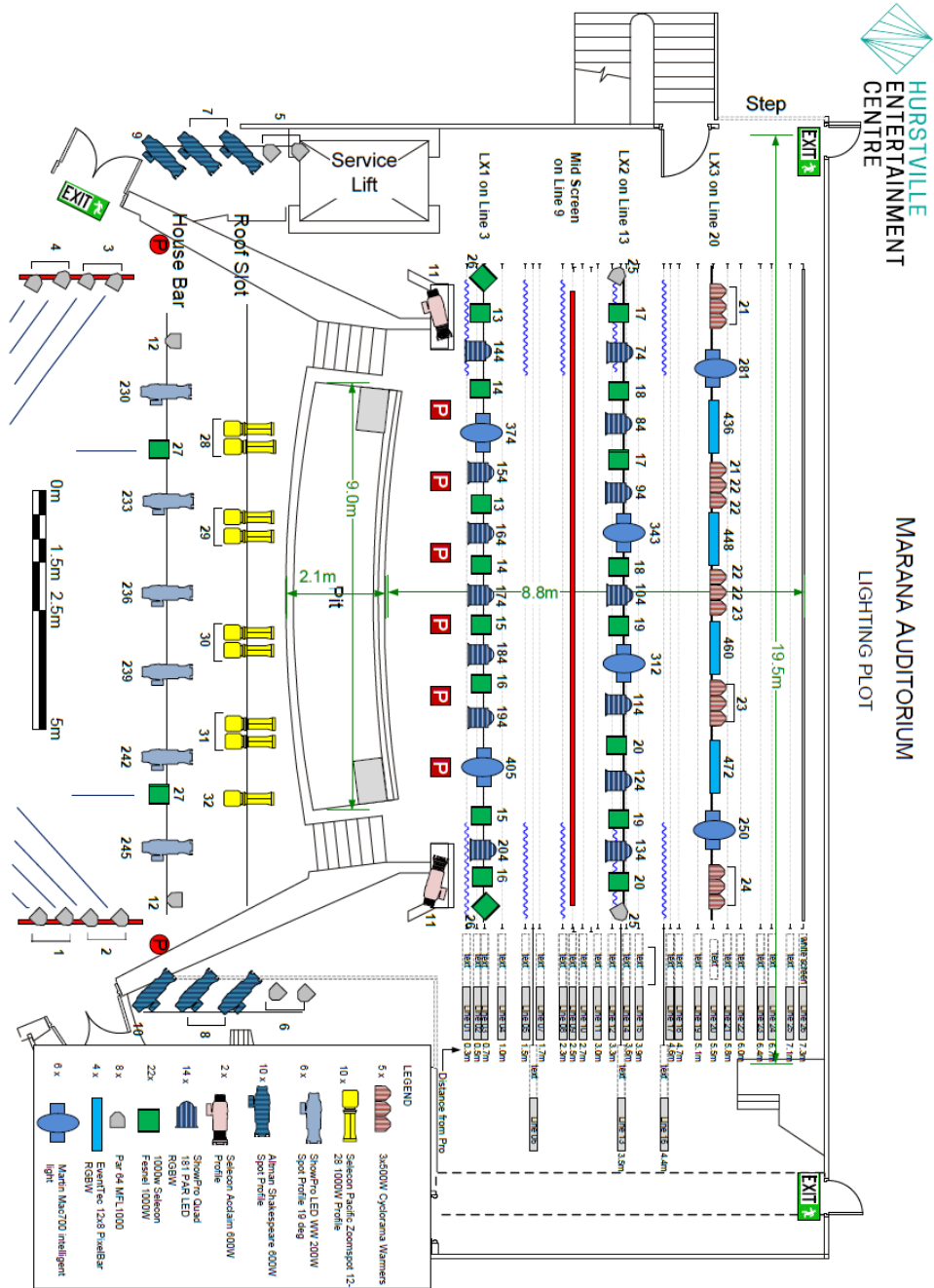
### MISCELLANEOUS:

- 1 x AHI Uplift Elevator Work Platform. Maximum heights 8.9 meters

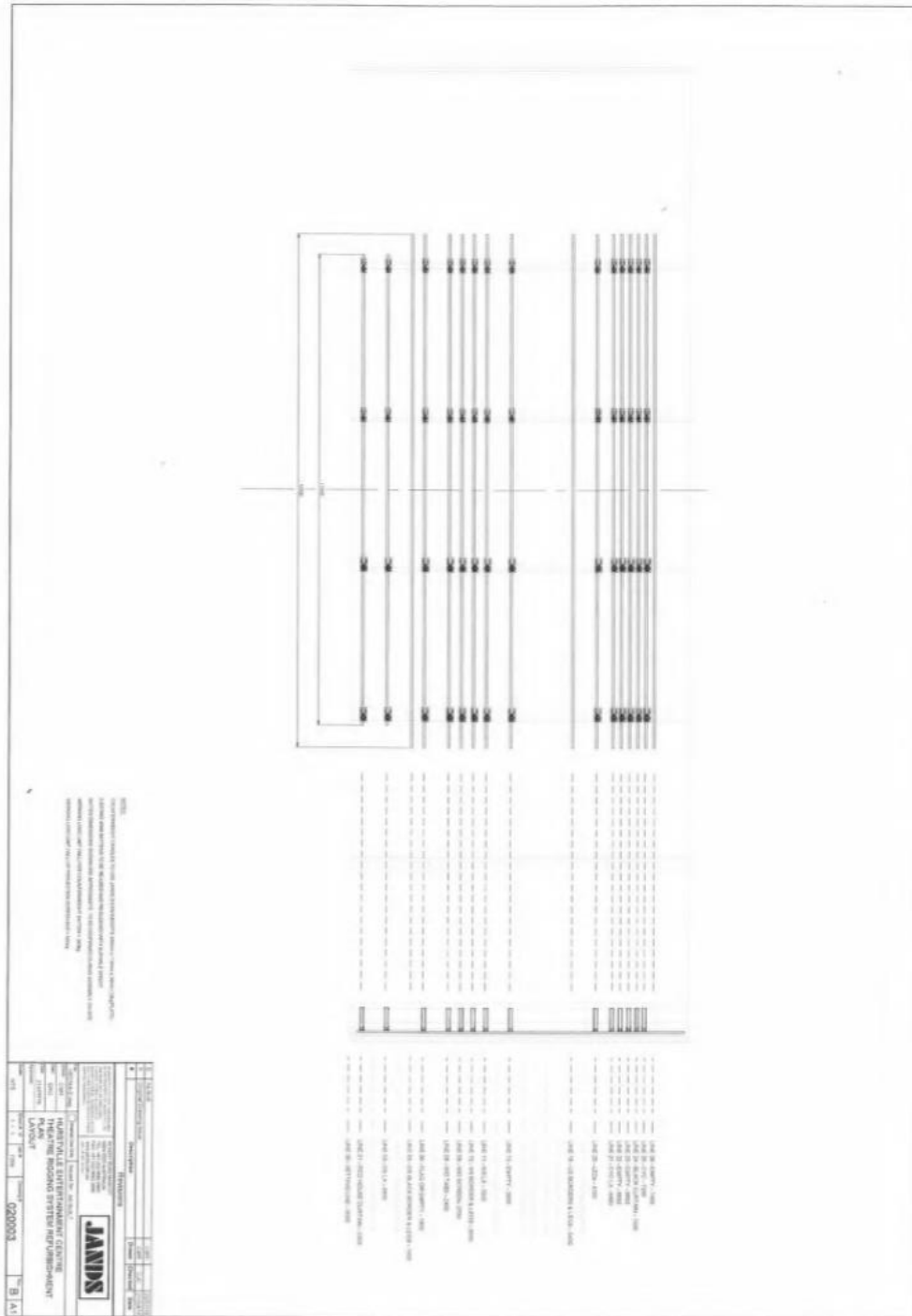
*\* These items not included in standard house rig – additional charges apply*



# Hurstville Entertainment Centre Marana Auditorium Technical Specifications January 2023



# Hurstville Entertainment Centre Marana Auditorium Technical Specifications January 2023



# Hurstville Entertainment Centre

## Marana Auditorium Technical Specifications January 2023

### CONTACT US

For further technical advice on the venue and additional equipment that may be required for your show, please contact:

HEC Technical Officer:

E: [entertainment@georgesriver.nsw.gov.au](mailto:entertainment@georgesriver.nsw.gov.au)

P: 02 9330 6190

M: 0411 743 248

Seating plans, venue images and interactive walk-through available on the HEC website:

[www.hec.org.au](http://www.hec.org.au)

